

Passcert

Higher Quality, better service!



Q&A

[Http://www.passcert.com](http://www.passcert.com)

We offer free update service for one year.

Exam : **E22-275**

Title : RecoverPoint Data
Replication and Recovery

Version : DEMO

1.You are implementing a RecoverPoint CRR solution. The RPAs that were delivered do not have the correct version of RecoverPoint.

What is the EMC-preferred way to load the correct software version to the RPAs?

- A. Before launching Deployment Manager
- B. During the Deployment Manager installation process
- C. After completing the installation but before the license is installed
- D. After the installation is complete

Answer: A

2.A customer is planning to deploy a 2-node RecoverPoint cluster at each data center. They will make use of dual stack for its LAN network connection.

How many IP addresses should the customer plan for per site, including management IP addresses.?

- A. 5
- B. 6
- C. 7
- D. 8

Answer: D

3.A customer wants to add a new RecoverPoint UserID. Which role must their UserID belong to in order to manage user settings?

- A. Security
- B. Admin
- C. Boxmgmt
- D. Monitor

Answer: A

4.In a cascaded RecoverPoint configuration, a customer experiences a site failure at the secondary site. What impact does this have on replication?

- A.Site 1 to Site 2 replication fails Site 2 to Site 3 replication fails
- B.Site 1 to Site 2 replication fails Site 2 to Site 3 replication continues
- C.Site 1 to Site 2 replication fails Site 1 to Site 3 replication continues
- D.Site 2 to Site 3 replication fails Site 1 to Site 3 replication continues

Answer: A

5.You are finalizing a RecoverPoint setup that makes use of the Symmetrix VMAXe splitter. You are about to create the masking view for the RecoverPoint cluster initiator group.

Which setting must be enabled to allow the RPAs to write to the replica volumes when image access is disabled?

- A. Write Protect Bypass
- B. Always Push Old
- C. Backlog Mirroring
- D. Device Tagging

Answer: A

6.Which device allows the installation of a Brocade splitter into a DCX director?

- A. PB-48k-18i
- B. PB-48k-AP
- C. PB-DCX-32P-E
- D. PB-DCX-48P-8G

Answer: B

7.What is the blade processor in a Brocade splitter?

- A. A separate command shell which loads and operates the splitter
- B. A special slot in a Brocade director with intelligent switch capabilities
- C. A daughterboard in the switch to allow RecoverPoint integration
- D. A dedicated memory space in the RPA to integrate with a Brocade switch

Answer: A

8.A customer has a RecoverPoint environment defined with two RPAs at each site. They created two consistency groups (CGs), each one in a different RPA. Their business requires that both consistency groups act as a single unit as they are dependent on one another.

How can they achieve this requirement?

- A. Create one Group Set for both CGs
- B. Enable the RecoverPoint Snapshot Consolidation feature
- C. Select the same primary RPA for both CGs
- D. Configure distributed consistency groups

Answer: A

9.You have just enabled the zones and re-enabled the configuration on a AP-7600B switch. Where would you run the `thirdparty/recoverpoint/install/kdrv status` command to verify the status of the kdriver on the switch?

- A. As root in the blade processor
- B. As admin in the blade processor
- C. As root in the control processor
- D. As admin in the control processor

Answer: A

10.Refer to the Exhibit.

```
Time:          Sun Apr 18 17:09:49 2010
Topic:         GROUP
Scope:        DETAILED
Level:        WARNING
Event ID:     4001
Site:         London
Groups:       [ESX_Group1_LUN_1-4, London_LUN_1-4]
Summary:      Group capabilities minor problem
Details:      Copies are linked.

RPA1:
Marking (GlobalCopy(LEFT_SITE 0)) = Yes - side defined as source. Site=Cologne.
Transfer (GlobalCopy(RIGHT_SITE 0)) = NO - Link connectivity problem.

RPA2:
Marking (GlobalCopy(LEFT_SITE 0)) = Yes - side defined as source. Site=Cologne.
Transfer (GlobalCopy(RIGHT_SITE 0)) = Yes
Journal (GlobalCopy(RIGHT_SITE 0)) = Yes
Preferred = NO

Group will run on RPA2
```

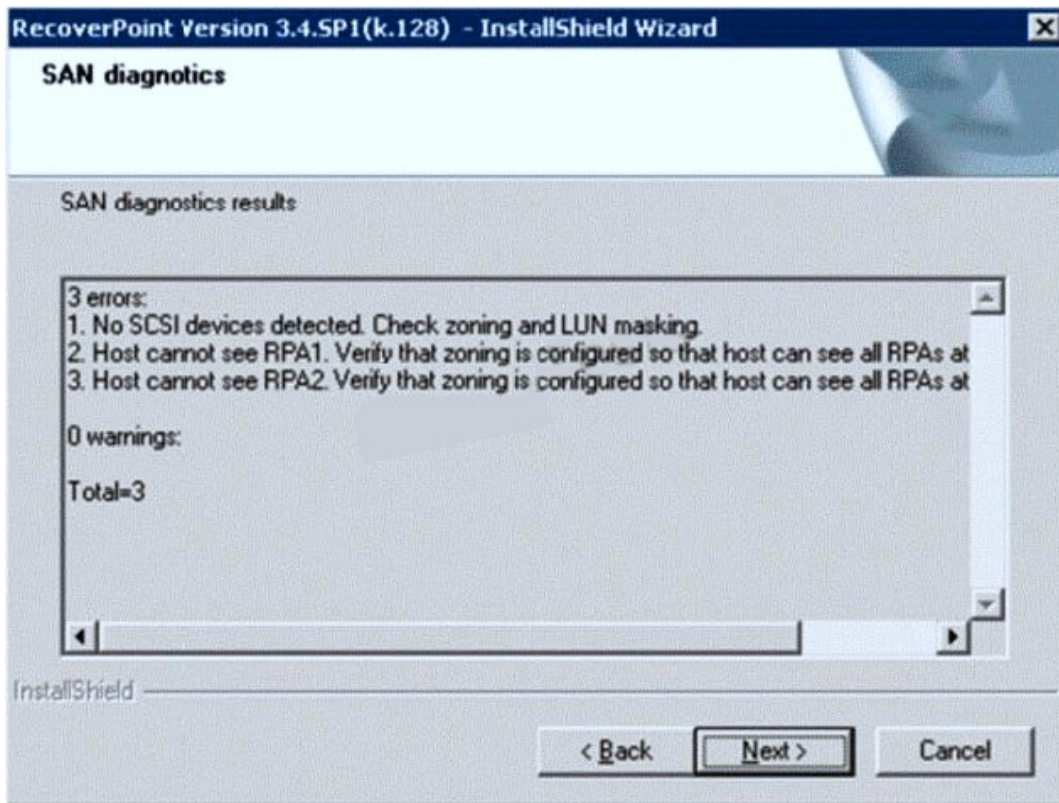
You are troubleshooting High Load activities on two consistency groups (CGs). As part of your tasks, you have run the data collect and are reviewing the system log files for the CGs.

What is a possible root cause for this High Load period?

- A. The preferred RPA has lost communications with the remote RPA and caused a failover of the CG within the cluster.
- B. The local site has lost connectivity to the remote site and caused the CG to go into Marking mode.
- C. There is no journal assigned to the CG in the local site, causing latency build up during data transfer.
- D. The copies are cross-connected between the sites causing additional I/O to flood the connectivity between the sites.

Answer: A

11. When installing a Microsoft Windows kdriver splitter, you receive the dialog box shown in the exhibit and the installation stops.



What must you do to recover the installation?

- A. Click Next, correct the SAN issue, and run SAN Diagnostics again
- B. Click Next and Accept the SAN issue warning to continue the installation
- C. Click Next to resume the installation with flags
- D. Click Back to reconfigure the kdriver parameters

Answer: A

12. You are installing the RecoverPoint splitter agent on a B-Series switch. After downloading the agent binary file to the blade processor, which step must be completed prior to successfully running the command?

- A. `chmod +x agent_binary_file`
- B. `chmod +rw agent_binary_file`
- C. `./thirdparty/recoverpoint/install/zoning_script.sh`
- D. `./thirdparty/recoverpoint/install/kdrv start`

Answer: A

13. You have a customer with an EMC VNX array at each site that uses both block and file storage. They would like to use the VNX splitter to replicate all their iSCSI data LUNs.

How would you configure RecoverPoint?

- A. Use the Consistency Group Wizard to create a CG
- B. Use Installation Manager and "Expose" all iSCSI LUNs
- C. Check the "Enable iSCSI Replication" option in the CG profile
- D. Replication of iSCSI LUNs are not supported at this time

Answer: A

14.Refer to the Exhibit.

Port 0			
	Port WWN	Node WWN	Port ID
1.	0x500601603ea0024d	Cx50060160bea0024d	cc02ef
2.	0x500601693ea0024d	Cx50060160bea0024d	cc03ef
Port 1			
	Port WWN	Node WWN	Port ID
1.	0x500601613ea0024d	Cx50060160bea0024d	1f00ef
2.	0x500601693ea0024d	Cx50060160bea0024d	1f01ef
Port 2			
	Port WWN	Node WWN	Port ID
1.	0x500601613ea0024d	Cx50060160bea0024d	1f00ef
2.	0x500601693ea0024d	Cx50060160bea0024d	1f01ef
Port 3			
	Port WWN	Node WWN	Port ID
1.	0x500601603ea0024d	Cx50060160bea0024d	cc02ef
2.	0x500601693ea0024d	Cx50060160bea0024d	cc03ef

You are troubleshooting a RecoverPoint issue where consistency groups, using a kdriver splitter, have stopped working. While analyzing the problem, you ran detect Fibre Channel targets from the SAN Diagnostics menu. What does this output tell you that relates to the problem in the environment?

- A. RPA is not zoned to any hosts
- B. All RPA HBA ports are being used as targets
- C. Even and odd ports should not see the same targets
- D. Ports 0 and 3 should not be connected to the same fabric

Answer: A

15.Which generation of RecoverPoint Appliance hardware must be used to ensure you can use a CRR over FC configuration?

- A. Gen2 and 3 only
- B. Gen2 and 4 only
- C. Gen2, 3, and 4
- D. Gen3 and 4 only

Answer: D

16.You have finished deploying SANTap in a RecoverPoint CRR environment. At Site 2 everything looks

fine. However, at Site 1 you see the following message on the RecoverPoint Management Application:
WARNING: RPA cannot access discovery AVT: 7001248288220000 ; Site1 ; RPA1 in Site1 ; Cisco -
CVT22-2109000dec3c3182

You have checked that back-end and front-end VSANs are properly configured with the correct members in each. Which action can you take to perform a full discovery of ITLs and recreation of AVTs to fix this issue?

- A. SSH as 'admin' and run the refresh_santap_view command
- B. Refresh the splitters on the RecoverPoint Management Application
- C. Rescan the SAN on the RecoverPoint Management Application
- D. SSH as 'admin' and run the get_santap_view command

Answer: A

17. In a Brocade splitter implementation using frame redirect mode, how many DPCs are available?

- A. 1
- B. 2
- C. 3
- D. 4

Answer: B

18. You want to upgrade a RecoverPoint environment using Deployment Manager (DM). As a prerequisite to continuing with the upgrade, which TCP port needs to be open between the management station where the DM is installed and the RPA management IP addresses?

- A. 22
- B. 23
- C. 80
- D. 161

Answer: A

19. You are selecting the RecoverPoint repository volume using Deployment Manager at a customer's site. If the customer's environment makes use of an EMC VNX array, what needs to be considered?

- A. Selected LUN will be formatted
- B. Use of a thin provisioned LUN is supported
- C. LUN is accessible by only one RPA
- D. Thin LUNs have to be pre-allocated

Answer: A

20. You have installed the Solaris kdriver on a host. When validating the installation, you find that the splitter is not seen by the RecoverPoint Management Application. Other splitters appear correctly in the GUI.

Which step should you take on the host to discover the splitter by the GUI?

- A. Run the /etc/init.d/kdrv start command
- B. Run the rc.kdrv configure command and restart the kdriver
- C. Run the rc.kdrv start command and reboot the host
- D. Run the devfsadm command

Answer: A