

Passcert

Higher Quality, better service!



Q&A

[Http://www.passcert.com](http://www.passcert.com)

We offer free update service for one year.

Exam : **642-871**

Title : Designing Cisco network
Service Architectures
(ARCH)

Version : DEMO

1.Which typical enterprise campus requirement ensures that the network supports the required applications and that data flows within the required time frames?

- A.availability
- B.performance
- C.functionality
- D.manageability
- E.scalability

Correct:C

2.What two choices can you make when redundancy is required from a branch office to a regional office? (Choose two.)

- A.multiple Frame Relay PVCs
- B.dual Wan links to the regional office
- C.dual Wan links to another branch office
- D.single links - one to the regional office and one to another branch office

Correct:B D

3.What type of Call Admission control in CallManager allows for limits to the bandwidth consumed by active calls?

- A.regions
- B.partitions
- C.locations
- D.device Pools

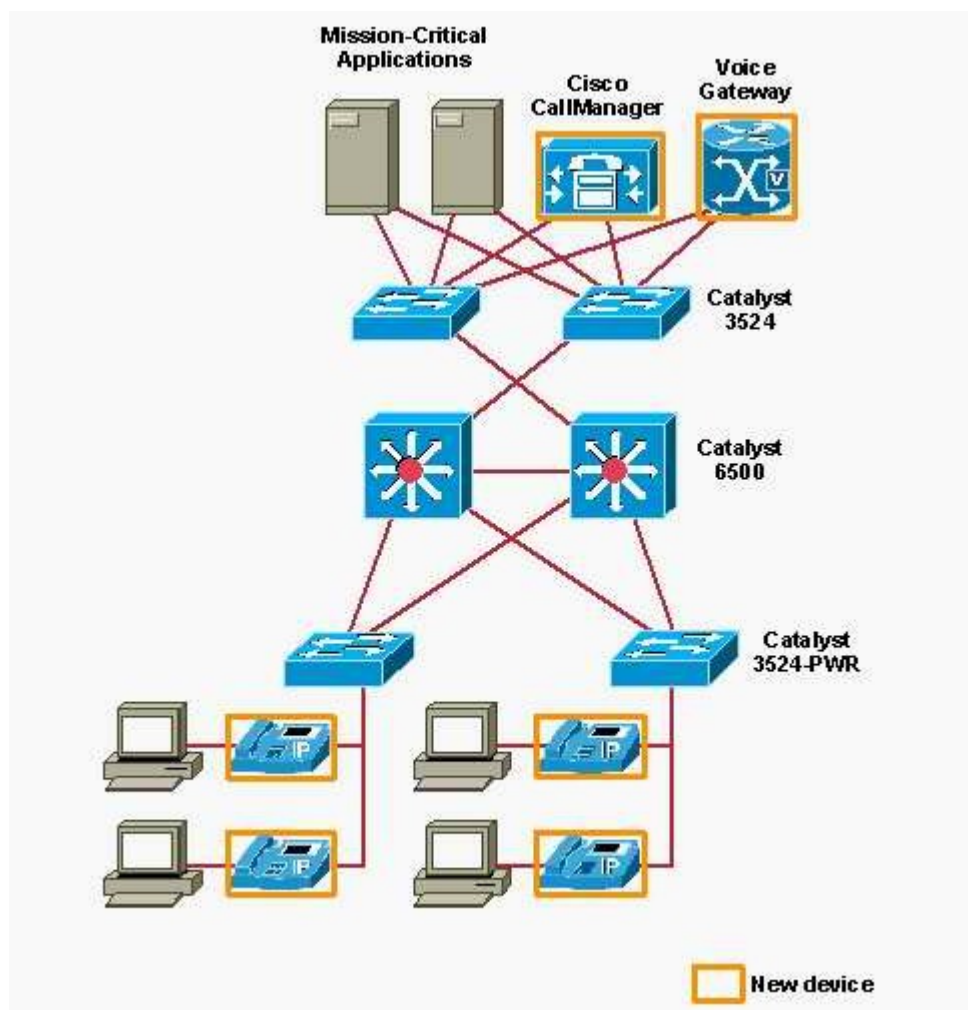
Correct:C

4.Which VPN management feature would be considered to ensure that the network had the least disruption of service when making topology changes?

- A.dynamic reconfiguration
- B.path MTU discovery
- C.auto setup
- D.remote management

Correct:A

5.Refer to the exhibit. CCC Machine has decided to deploy a Voice over IP solution in its main campus headquarters. The design calls for the insertion of a Cisco CallManager, Cisco IP phones, and a voice gateway. Due to the new application requirements, what three changes should be made to the access layer of the CCC network design? (Choose three.)



- A. The trust boundary should be extended from the 3524-PWR access switches to include the IP phones.
- B. Ingress rate-limiting should be configured on 3524-PWR access switches to ensure Voice over IP bandwidth guarantees.
- C. A new voice-only VLAN should be established and extended from the IP phones throughout the campus.
- D. Configure the 3524-PWR access switches to ensure Voice over IP packets are given preferential treatment by enabling voice traffic to use separate queues.
- E. Since end-user workstations cannot run CDP, disable it on the IP phones to improve performance and increase security.

Correct: A C D

6. Which three components are part of the Intelligent Network Services provided by the Cisco AVVID framework? (Choose three.)

- A. IP telephony
- B. security
- C. IP multicasting
- D. work force optimization
- E. e-business infrastructure
- F. QoS

Correct: B C F

7.Which three best practices should be implemented at the campus backbone submodule to support the server farm module? (Choose three.)

- A.Implement highly redundant switching and links with no single points or paths of failure.
- B.Implement server load balancing.
- C.Implement the Hot Standby Router Protocol (HSRP) for failover protection.
- D.Dual home all servers.
- E.Implement intrusion detection with automatic notification of intrusion attempts in place.
- F.Deploy caching systems.

Correct:A C E

8.The network administrator would like to generate synthetic traffic using the Service Assurance Agent contained in Cisco IOS. Which CiscoWorks network management application will be used to report the latency and availability for configured traffic operations on an end-to-end and hop-by-hop (router-to-router) basis?

- A.nGenius Real-Time Monitor
- B.CiscoView
- C.Device Fault Manager
- D.Internetwork Performance Monitor

Correct:D

9.Look at the picture.

This is a "Testlet" - it contains 4 question(s) that relate to the scenario below.

Scenario
Refer to the exhibit. The Lafayette School System needs an IP addressing scheme that is manageable and scalable. Its ISP will provide only one registered Class C address. A 20 percent overall growth in IP addresses is predicted.

The school buildings are as follows.

Topology
One administration building:
- 45 PCs and server
- Web server
- Internet connection

Three elementary schools:
- 15 classrooms with 4 PCs per room

Question 1 of 4
How would you deploy the IP addressing scheme in the elementary schools?

- a set of public IP addresses with one Class B address for each elementary school
- a set of private IP addresses with one Class C address for each elementary school
- a set of private IP addresses with two Class C addresses subnetted between the elementary schools
- a set of public IP addresses with one Class C address subnetted between the elementary schools

Correct:

10.Which protocol would provide block access to remote storage over WAN links?

- A.iSCSI
- B.FCIP
- C.SCSI-FP

D.eSCSI

E.CIFS

Correct:A

11.What is the device weight limit per CallManager in a Cisco IP phone configuration?

A.2500

B.3000

C.5000

D.6500

Correct:C

12.Acme Nutrition manufactures a wide variety of vitamin supplements. It has a single manufacturing facility with 3 regional warehouses and 16 district sales offices. Currently the manufacturing facility requires 210 IP addresses; each warehouse requires 51 IP addresses; each district sales office requires 11 IP addresses; and the IP WAN requires 38 IP addresses. If Acme Nutrition plans for 20 percent growth in facilities, how many Class C subnets will the district sales offices require?

A.19 (3 from the warehouse range and 16 from a separate Class C address)

B.19 (3 from the warehouse block, 15 from a separate Class C block and 1 from the IP WAN block)

C.20 (4 from the warehouse range,15 from a separate Class C block and 1 from the IP WAN block)

D.16 (3 from the warehouse range and 13 from a separate Class C address)

E.18 (2 from the Warehouse range and 14 from a separate Class C address)

F.16 (all from a separate Class C address)

Correct:B

13.With Call Manager v3.1, what is the maximum number of servers in a Cluster?

A.3

B.6

C.7

D.8

Correct:D

14.What are three features of the Cisco Product Advisor tool? (Choose three.)

A.It can be used in a novice, question-and-answer mode.

B.You can begin searching categories that include routing, switching, and IP telephony.

C.It covers only select routers from the 800 Series through the 7400 Series.

D.It includes a wireless product search category.

E.It covers select switches from the Catalyst 2800 Series through the Catalyst 8500 Series.

F.It narrows down Cisco networking products based on product cost and network requirements.

Correct:A C D

15.Morris Prosthetics is having problems with serialization delay on its WAN links. The links currently carry less than 768 Kbps. Which Layer 2 mechanism can help solve the problem?

A.Compressed Real-Time Transfer Protocol

B.link fragmentation and interleaving

C.differentiated service code points

D.Integrated Services module

Correct:B

16.Look at the picture.

Drag the test element on the left to the correct prototype test creation step.

Use protocol analyzers	Step 1 Review the requirements
Network management tools	Step 2 Determine the extent of the requirements
Draw a network diagram.	Step 3 Understand alternative proposals
Outline the proof to demonstrate your design works.	Step 4 Develop a test plan
Determine amount of plan that must be built to verify.	Step 5 Purchase and prepare equipment
Brainstorm what the competition might use.	Steps 6 and 7 Practice, conduct final tests and demonstration

Correct:

Green choice5---->Yellow Choice1

Green choice6---->Yellow Choice2

Green choice4---->Yellow Choice3

Green choice1---->Yellow Choice4

Green choice2---->Yellow Choice5

Green choice3---->Yellow Choice6

17. In an Internet e-commerce, browser-based application, which method can have the greatest impact on optimizing WAN bandwidth usage?

- A. multiplexing
- B. compression
- C. content networking
- D. secure sockets layer (SSL)

Correct: C

18. When designing the WAN module within the enterprise edge, which document is used to specify the connectivity and performance agreements with the service provider?

- A. RFP
- B. RFC
- C. SLC/SLA
- D. SOW

Correct: C

19. Which four QoS design requirements are the closest to Cisco recommendations for VoIP traffic? (Choose four).

- A. one-way latency of 150 ms to 200 ms
- B. serialization delay of 100 ms to 150 ms

- C.less than 30 ms of jitter
- D.less than 1 percent of packet loss
- E.fixed 64 kbps of guaranteed priority bandwidth per call
- F.150 bps (+ Layer 2 overhead) of guaranteed bandwidth for voice control traffic per call

Correct:A C D F

20.Which routing protocol supports a flexible area structure using routing levels one and two?

- A.OSPF
- B.EIGRP
- C.IS-IS
- D.BGP
- E.RIPv2
- F.IGRP

Correct:C