

# ***Passcert***

Higher Quality, better service!



# **Q&A**

***[Http://www.passcert.com](http://www.passcert.com)***

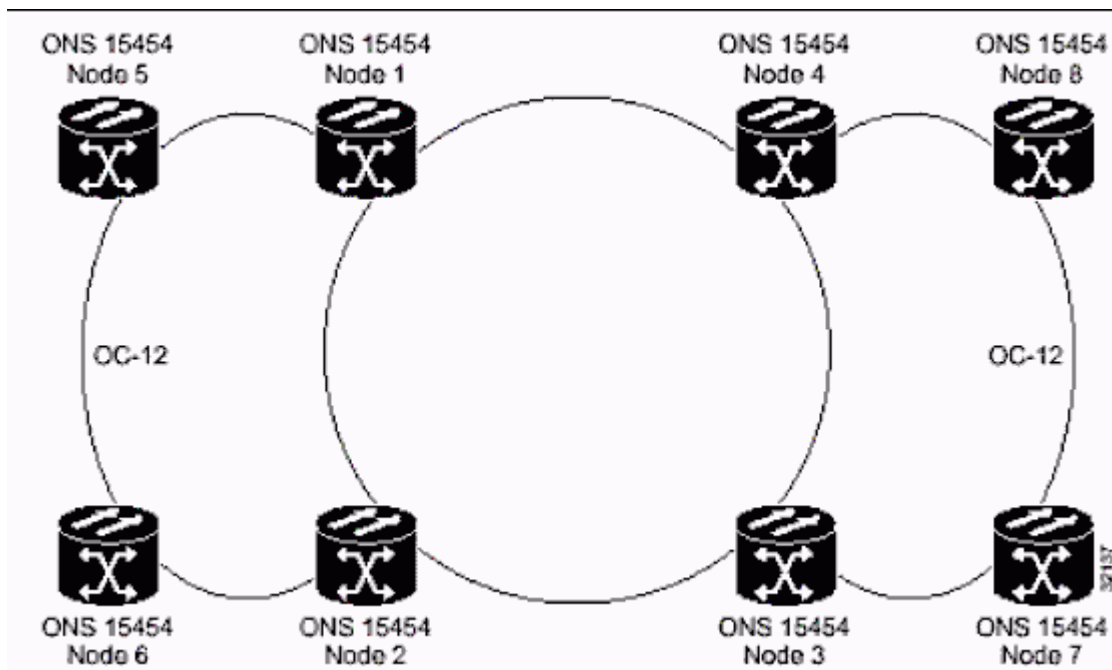
***We offer free update service for one year.***

**Exam** : **350-027**

**Title** : CCIE Written: Metro  
Ethernet

**Version** : DEMO





- A.This scenario will not work because Gigabit Ethernet can't be connected to FastEthernet over MPLS.
- B.This scenario will work because the issues concerning Gigabit and FastEthernet over MPLS with default behavior should not make any difference.
- C.This scenario will not work because Gigabit usually has MTU over 9000 and FastEthernet 1500.
- D.This scenario will not work because one side has dot1q header and another side is in port mode.
- E.This scenario will work by configuring PWE Class using the Interworking feature. By default, the MTU on each side is 1500, so this is an acceptable solution.

**Correct:E**

**5.Which do NOT exist?**

- A.Per VLAN Spanning Tree (PVST).
- B.Per VLAN Spanning Tree Plus (PVST+).
- C.Per VLAN Spanning Tree Plus Plus (PVST++).
- D.Rapid STP (RSTP).
- E.Resilient STP (RSTP).

**Correct:C E**

**6.Which commands are valid in ethernet or ethernet VLAN attachment circuits?**

- A.match cos
- B.match ethernet cos
- C.match source-mac
- D.match vlan
- E.match ethernet multicast

**Correct:A D**

**7.OSPF is defined on a Frame Relay interface providing point-to-multipoint connections. The remote neighbors can reach this central site, but are complaining of routing failures between each of the remote sites. The central router has all the routes for each remote site. Based on this information, what can be diagnosed as the biggest potential problem?**

- A.An over-subscribed Frame Relay switch will cause some packet loss.

- B. There are problems in the use of OSPF Authentication.
- C. There is an incorrect selection of the Designated Router.
- D. There is an incorrect DLCI assigned on a point-to-point sub-interface.

**Correct: C**

**8. EIGRP applies the principle of Feasible Successor (FS) in resolving a new path to a lost route. What statement regarding the FS is correct?**

- A. Information is stored for the FS as part of the Link-State Routing updates forwarded for EIGRP.
- B. EIGRP estimates the FS from each neighbor for each network after an exchange of database information during the normal update process. It uses this information for path selection when a route is lost.
- C. When EIGRP is notified that a route is lost, it will always send requests to each neighbor for ways to reach the lost route. The neighbor that returns the best path will qualify as the FS.
- D. EIGRP nominates a central router as the FS for all lost routes during configuration.

**Correct: B**

**9. What technology allows transporting Layer2 attachment circuits over IP-only backbones?**

- A. GRE
- B. AToM
- C. L2TPv3
- D. DLSW+

**Correct: C**

**10. Which are supported ways of transporting ATM over MPLS?**

- A. AAL5 SDU VC Mode
- B. AAL5 SDU VP Mode
- C. Packet Cell Relay AAL5 Trunk Mode
- D. Packed Cell Relay Trunk mode
- E. AAL2oMPLS

**Correct: A C**

**11. What IE is not mandatory in a Q.931 Service msg?**

- A. Bearer capability
- B. Channel ID
- C. Message Type
- D. Change Status
- E. Call Reference

**Correct: A**

**12. Which statements are true regarding VPLS?**

- A. There is a full mesh of pseudowires.
- B. There is a partial mesh of pseudowires.
- C. Only L2TPv3 can be used for pseudowire establishment.
- D. STP runs in the core.
- E. There is split-horizon to avoid loops.

**Correct: A E**

**13. How many bits does TCI contain?**

- A. 1
- B. 3

- C.6
- D.12
- E.16
- F.20

**Correct:E**

**14.What command is used for Interworking configuration?**

- A.`interworking {etherner | ip} in interface config mode.
- B.`interworking {etherner | ip} in pseudowire-class config mode.
- C.`Interworking {bridged | routed} in l2tp-class mode.
- D.`{ip | ethernet}Interworking in pseudowire-class config mode.

**Correct:B**

**15.A router is set to boot from flash, but cannot find boot commands in the configuration. Also, valid files do not exist in the default flash device. The router will:**

- A.Boot from ROM, since there are no valid sources
- B.Try to boot from the network, using a default filename
- C.Terminate the boot process with an error message
- D.Try to boot from the network, then boot from ROM as a backup

**Correct:D**

**16.What specification defines LACP?**

- A.IEEE 802.11
- B.IEEE 802.1q and IEEE 802.1p
- C.IEEE 802.3ad
- D.ITU Q.922
- E.RFC2547

**Correct:C**

**17.Estimating the MTU for EoMPLS Packets Edge MTU of 1500, Transport header, AToM header present, MPLS label, and stack MPLS Label, calculate the core MTU requirements to handle EoMPLS port mode packets.**

- A.1518
- B.1520
- C.1524
- D.1526

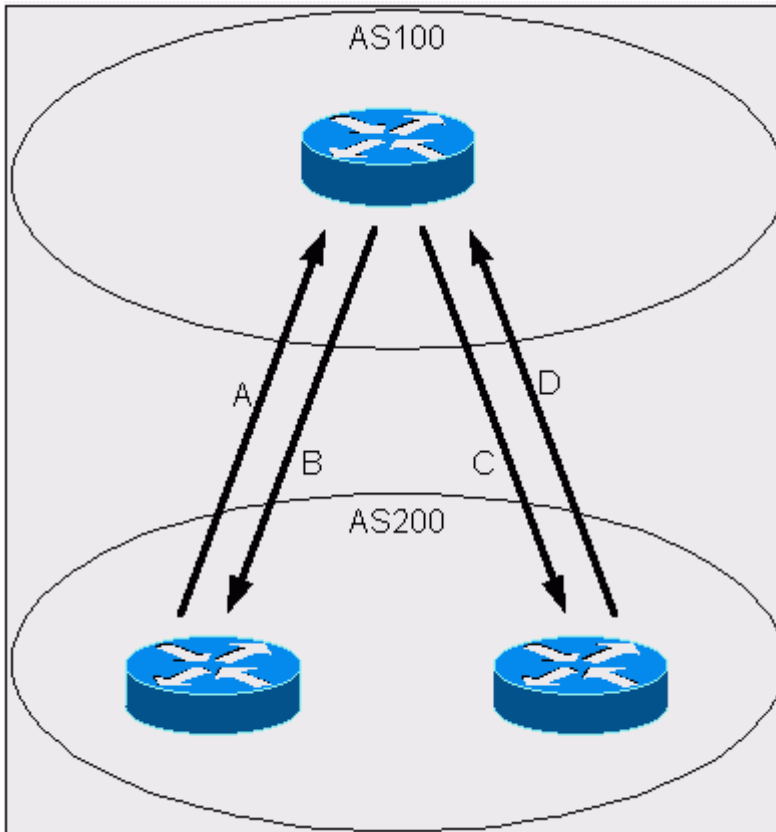
**Correct:D**

**18.What protocol is not disabled by the 'no service tcp-small-servers' command?**

- A.Echo
- B.Finger
- C.Chargen
- D.Discard
- E.Daytime

**Correct:B**

**19.Click the Exhibit button to view the topology. According to the diagram, what attribute is initiated by AS200 (IBGP) to give preference to the path A or D traffic will take when going from AS200 to AS100? What attribute is initiated by AS200 (EBGP) to give preference to the path B or C traffic will take when going from AS100 to AS200?**



- A.MED; Origin
- B.MED; Local Preference
- C.Community; Origin
- D.Local Preference; MED
- E.Origin; Community

**Correct:D**

**20.Which are components of VPLS?**

- A.BGP extensions
- B.Pseudowire technology
- C.LDP extensions
- D.Etherchannel technology
- E.MAC Address learning and forwarding on a virtual port

**Correct:A B E**