

Passcert

Higher Quality, better service!



Q&A

[Http://www.passcert.com](http://www.passcert.com)

We offer free update service for one year.

Exam : **070-284**

Title : Installing, Configuring, and
Administering Microsoft
Exchange 2003 Server

Version : Demo

1.You are the Exchange administrator for your company. The network consists of a single Active Directory domain. All network servers red Microsoft Windows Server 2003. Exchange Server 2003 is used as the messaging system.

The accounting department hires a consultant on a temporary basis. The consultant needs to access the department's file server. The department needs to ensure that the consultant's external e-mail address appears in the global address list (GAL) and that mail sent to him is sent to his external e-mail address.

You need to create an Active Directory object in the domain to fulfill these requirements.

Which type of object should you create?

- A.a mail-enabled Contact object
- B.a mail-enabled User object
- C.a mailbox-enabled User object
- D.a mailbox-enabled InetOrgPerson object

Answer: B

2.You are the Exchange administrator for your company. Exchange Server 2003 runs on a Microsoft Windows Server 2003 member server. The Exchange server contains two mailbox stores. All user accounts are located in the Accounts organizational unit (OU).

An e-mail virus infects all mailboxes on both mailbox stores. You create a nonadministrative user that needs to be able to use the Exmerge utility. This user does not have the necessary permissions to open other users' mailboxes.

You need to assign this user permission to open all users' mailboxes to extract the virus.

What should you do?

- A.Assign the user Full Control permissions to the Accounts OU.
- B.Assign the user Send As and Receive As permissions to the administrative group.
- C.Add the user to the Exchange Domain Servers group.
- D.Add the user to the Enterprise Admins global group and to the Exchange server's local Administrators group.

Answer: B

3.You are the Exchange administrator for your company. The network contains a single Exchange Server

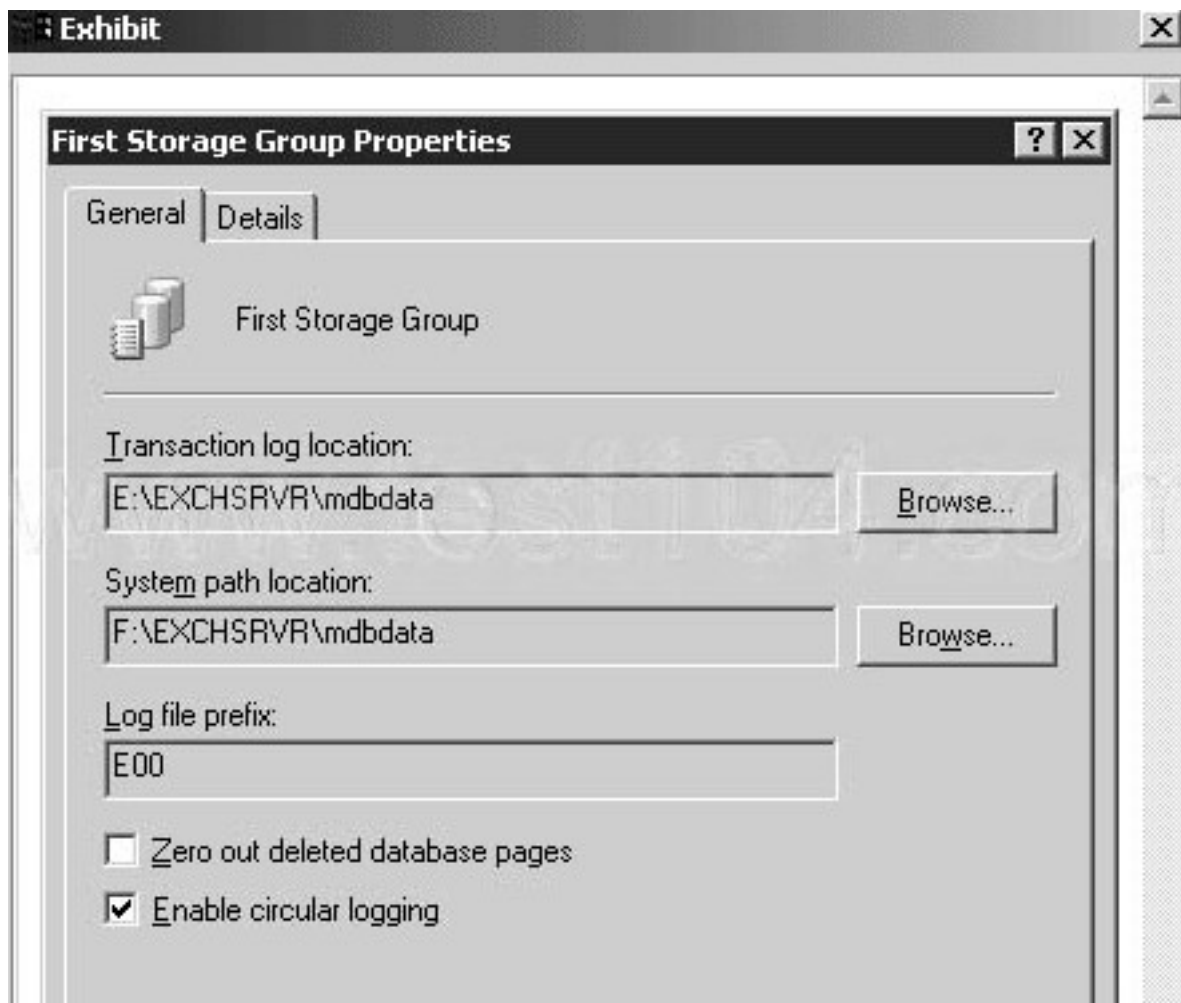
2003 computer. The Exchange server contains one storage group and one mailbox store.

Full backups of the mailbox store and transaction log files are performed every night.

After the mailbox store is restored from tape, users report that some of their e-mail messages are not restored. You discover that the storage group is configured as shown in the exhibit. (Click the Exhibit button.)

You need to ensure that after you restore the mailbox store, users have all of the most current data.

What should you do?



- A. Zero out deleted database pages after you perform a restore operation.
- B. Disable circular logging before you perform a backup.
- C. Perform only shadow copy backups and shadow copy restore operations.
- D. Create a mailbox store policy. Select the option to keep deleted messages for 30 days. Add the mailbox store to this policy.

Answer: B

4.You are the Exchange administrator for your company. The network currently consists of a two-node Exchange Server 2003 active/passive cluster. Three hundred HTTP client computers connect to the Exchange servers by using SSL.

Users report that the response time of their Microsoft Outlook Web Access screen refreshes is unacceptably slow. You add two more servers to the existing Exchange environment.

You need to ensure that your HTTP client computers have redundancy and acceptable client response times.

Which two actions should you perform? (Each correct answer presents part of the solution. Choose two.)

- A. Join the new servers to the existing cluster.
- B. Select the option to configure the new servers as front-end servers.
- C. Configure the new servers so that they use Network Load Balancing.
- D. Create an Exchange System Attendant cluster resource for each front-end server on the existing cluster.

Answer: BC

5.You are the Exchange administrator for the company. The company operates two offices; one in London and one in Leipzig.

The Exchange organization contains eight servers that run Exchange Server 2003. Each office contains four Exchange servers. Each office is configured as a routing group. The routing groups are connected by a routing group connector.

In each office, one Exchange server is configured as a bridgehead server. Each bridgehead server is configured with two SMTP virtual servers. One SMTP virtual server is configured as the bridgehead server for the SMTP connector for e-mail messages sent to and from the Internet. The other SMTP virtual server is configured as the bridgehead server for the routing group connector.

You need to ascertain the number and size of e-mail messages sent between the two offices, and to and from the Internet, every day. You need to specify the number of messages sent, the total size of messages sent, and the appropriate queue length on each server. You will use this data to plan for future growth.

Now should you modify each bridgehead server?

- A. Configure a counter log to monitor both SMTP virtual servers.

- B. Configure a counter log to track all messages sent by the Microsoft Exchange MTA Stacks service.
- C. Configure SMTP logging on both SMTP virtual servers.
- D. Configure SMTP logging on the SMTP virtual server that sends and receives e-mail messages to and from the Internet. Configure a counter log to track all messages sent between routing groups by the Microsoft Exchange MTA Stacks service.

Answer: D

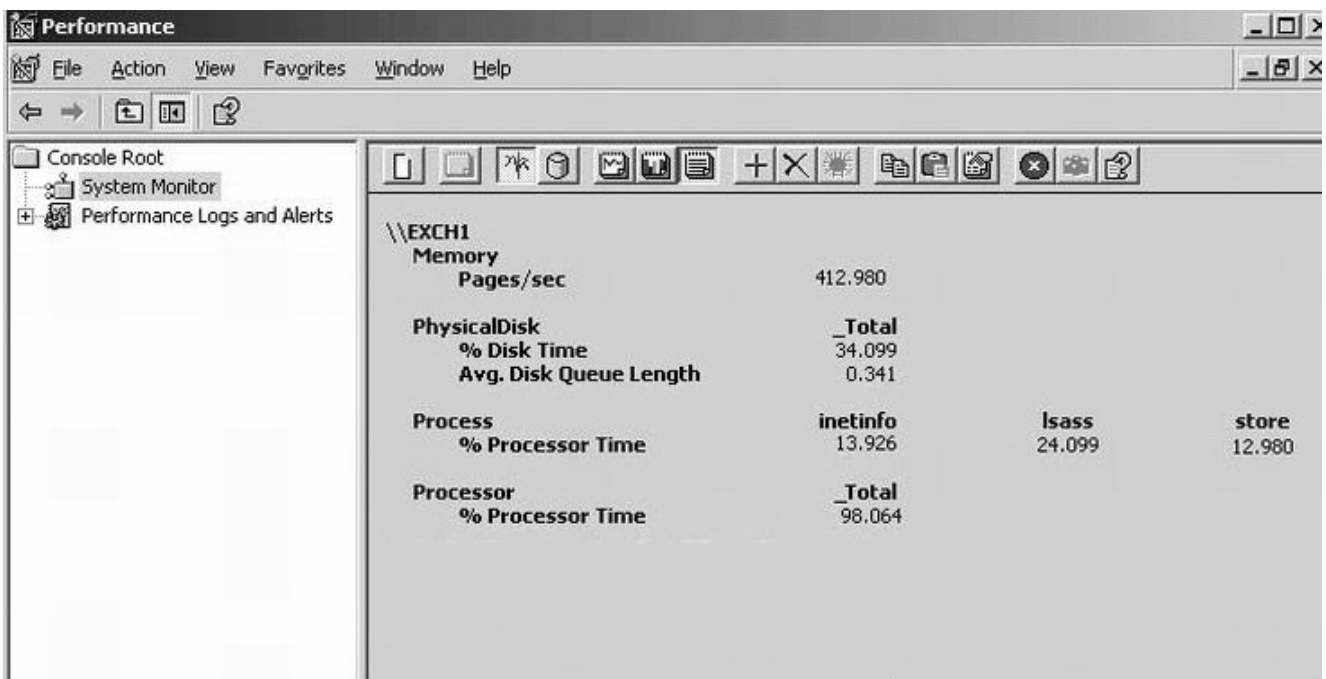
6.You are the Exchange administrator for the company. The main office has 5,700 users, A total of 1,500 users work in 70 different branch offices. All branch offices are connected to the main office by WAN connections.

The Exchange organization contains four servers that run Exchange Server 2003. Each Exchange server contains 1,800 mailboxes. All Exchange servers are located in the main office and are configured as Microsoft Outlook Web Access servers. Only SSL connections are accepted for Outlook Web Access.

Branch office users connect to the Exchange servers by using Outlook Web Access. They report unacceptably slow response times when they access the servers. You use System Monitor on one Exchange server to collect the performance data shown in the exhibit. (Click the Exhibit button.)

You need to optimize the performance of Outlook Web Access for branch office users.

What should you do?



- A. Install additional RAM on each Exchange server.
- B. Install an additional physical disk on each Exchange server. Move the paging file to the new disk.
- C. Install an additional Exchange Server 2003 computer. Configure the new server for SSL and configure it as a front-end server. Instruct all branch office users to use the new server for Outlook Web Access.
- D. Install an additional Exchange Server 2003 computer. Move all mailboxes for branch office users to the new server, Configure the new server for SSL. Instruct all branch office users to use the new server for Outlook Web Access.

Answer: C

7. You are the Exchange administrator for your company. The Exchange organization consists of several sites containing Exchange Server S.S computers and several administrative groups containing Exchange Server 2003 computers. The site named London contains an Exchange Server S.S computer named Mail 1, which will be retained for the next two years.

You install a computer named Mail2 into the London site. You install Exchange Server 2003 on Mail2.

You move some mailboxes to Mail2. You find out that the hardware configuration of Mail2 is not adequate for the required workload. In preparation for replacing Mail2, you install a new computer named Mail3 into the administrative group. You install Exchange Server 2003 on Mail3 and move all mailboxes from Mail2 to Mail2.

You need to ensure that Mail2 can be removed from the network without disrupting Exchange services. To minimize the load on Mail2, you must not move any unnecessary roles to it.

Which three actions should you perform? (Each correct answer presents part of the solution. Choose three.)

- A. Replicate the Offline Address Book folder to Mail3. Remove the replica from the original owner of the folder.
- B. Replicate the CAB Version 2 folder to Mail3. Remove the replica from the original owner of the folder.
- C. Replicate the Schedule+ Free Busy folder to Mail3. Remove the replica from the original owner of the folder.
- D. Modify the Recipient Update Service to use Mail3.
- E. Create an instance of the Site Replication Service on Mail3. Remove the original instance.
- F. Configure the routing group to designate Mail3 as the routing group master.

Answer: DEF

8.You are the Exchange administrator for your company. The Exchange organization contains a single server that runs Exchange Server 2003. The Exchange server contains one storage group and one mailbox store.

You discover that the mailbox store is corrupted and will not mount.

You need to ensure that you restore the most current data possible.

What should you do?

- A. Create the Recovery Storage Group. Set the path to be the same as the path for the existing mailbox store.
- B. Create the Recovery Storage Group. Set the database path to C:\ Program Files\Exchsrvr\Recovery Storage Group.
- C. Restore the mailbox store and then mount the mailbox store.
- D. Delete the database and transaction log files. Then mount the mailbox store.

Answer: C

9.You are the Exchange administrator for your company. The company operates three offices. The network consists of a single Active Directory domain. Each office has one domain controller that runs Microsoft Windows Server 2003.

You plan to deploy one Exchange Server 2003 computer in each office. Each Exchange server must be placed in a separate administrative group. The forest and the domain are already prepared to support Exchange Server 2003.

When you try to install the first Exchange server, you discover that you cannot choose an administrative group in which to place the server. You cancel the installation.

You need to ensure that you can choose an administrative group during installation.

What should you do?

- A. Install Exchange Server 2003 by running the setup /choosedc command and specify the local domain controller.
- B. Install Exchange System Manager. Create the administrative groups.
- C. Install Exchange System Manager. At the Exchange organization level, assign the Exchange Full

Administrator permissions to the account used to install Exchange Server 2003.

D. At the Administrative Groups container level, use Active Directory Sites and Services to assign the Full Control permission to the account used to install Exchange Server 2003.

Answer: B

10. You are the Exchange administrator for your company. All seven servers in the Exchange organization run Exchange Server 2003.

Your company acquires another company that uses a single Novell GroupWise server that runs on Netware. The GroupWise mailboxes are assigned SMTP addresses in a namespace that is different from the namespace used by the Exchange mailboxes. For business reasons, it is not possible for you to migrate the GroupWise users to Exchange immediately.

You configure one of the Exchange servers, which has no local mailboxes, as a dedicated bridgehead server for communications to the GroupWise server. Exchange users can see the GroupWise users in the Exchange global address list (GAL) and can send messages to them.

However, when the Exchange users want to send meeting requests, they cannot view the free or busy status of Groupwise users.

You need to ensure that the Exchange users can view the free or busy status of the Groupwise users.

What should you do?

- A. On the Exchange bridgehead server, configure the Calendar Connector.
- B. On the Exchange bridgehead server, install the Gateway Service for NetWare.
- C. On the Exchange bridgehead server, add a replica of the Schedule+ Free Busy folder.
- D. On the Exchange bridgehead server, create an SMTP connector to one of the GroupWise SMTP.
- E. On all Exchange servers, install the Microsoft Exchange Connector for Novell GroupWise.

Answer: A

11. You are the Exchange administrator for your company. Exchange Server 2003 is the messaging system. The Exchange organization includes a two-node active/active server cluster that provides failover capabilities for each of the two Exchange Virtual Servers (EVSs).

You need to ensure that the cluster will automatically balance the two EVSs evenly across both cluster nodes, as long as both nodes are operational. You must not remove the existing failover capabilities.

Which two actions should you perform? (Each correct answer presents part of the solution. Choose two.)

- A. Configure failover for each EVS.
- B. Configure failback for each EVS.
- C. Configure a single preferred node for each EVS.
- D. Configure a single possible node for each EVS.
- E. Configure the quorum disk resource so that it does not affect the cluster resource group when a failure occurs.

Answer: BC

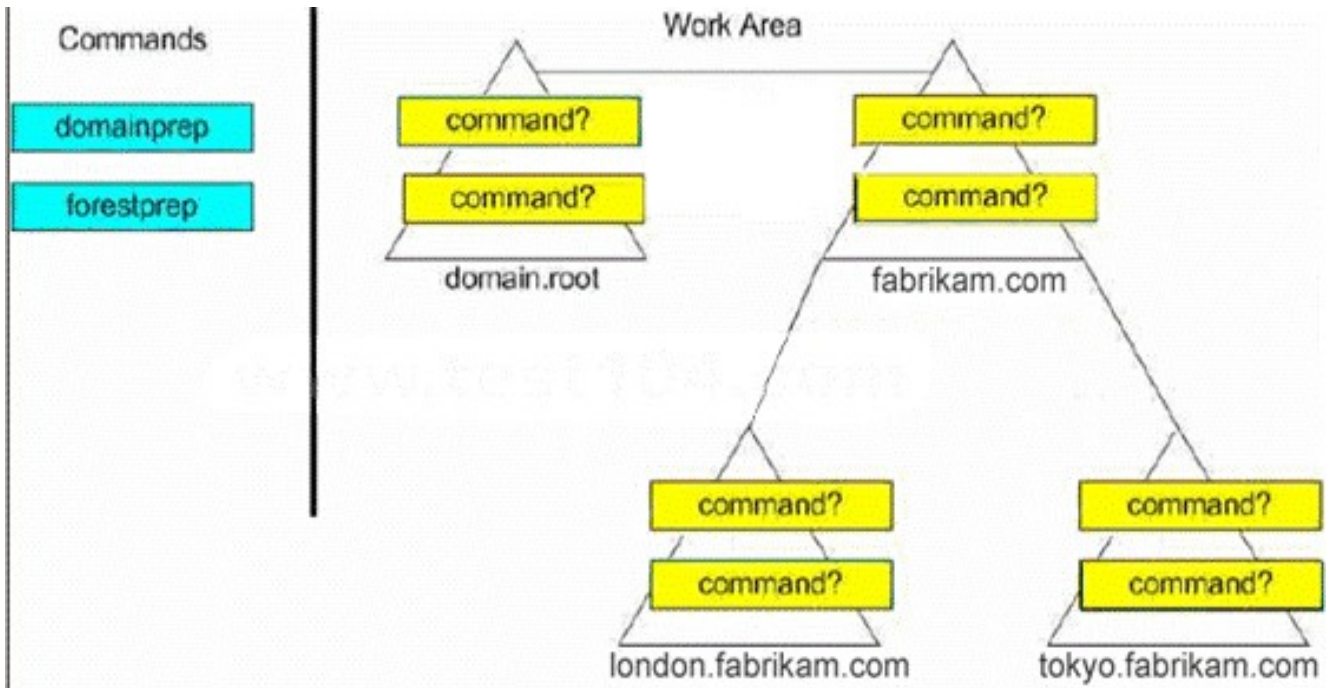
12. You are the Exchange administrator for the company. The network consists of a single Active Directory forest.

The forest root domain is named domain.root. The domain structure is shown in the work area.

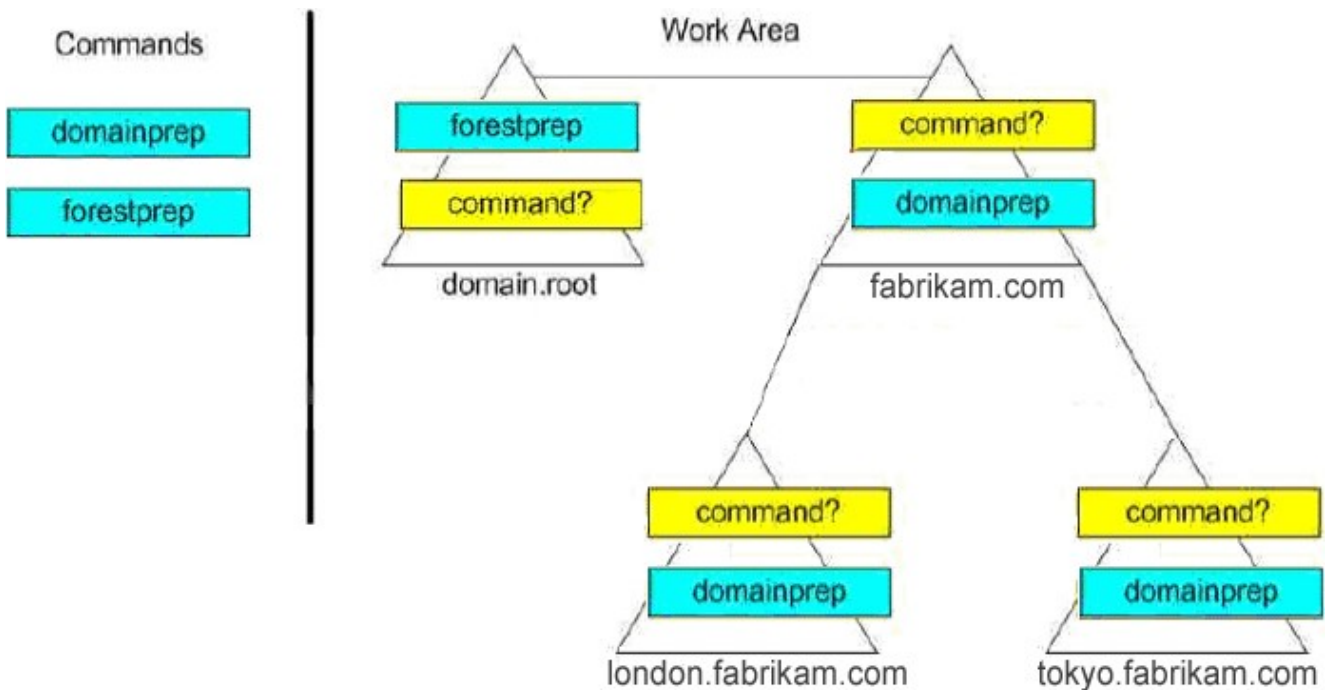
You plan to implement Exchange Server 2003 as the companywide messaging system. Exchange servers must be deployed only in the fabrikam.com and london.fabrikam.com domains. Each domain in the fabrikam.com tree must contain mailbox-enabled users and mail-enabled groups. You need to run the appropriate command or commands to ensure that the Active Directory infrastructure is prepared to support this implementation. Your solution must require the minimum amount of administrative effort.

Which setup command or commands should you run, and in which domains?

To answer, drag the appropriate setup command or commands to the correct domain or domains in the work area.



Answer:



13. You are the Exchange administrator for the company.

The network consists of a single Active Directory domain.

The Exchange organization contains eight servers that run Exchange server 2003. All Exchange servers are member servers, and all are located in the computers container in Active Directory.

Written company security policies specify the audit settings, event log settings, and security policy

settings that must be applied to all Exchange servers.

You need to ensure that the Exchange servers comply with the written security policies. Your solution must require the minimum amount of administrative effort to maintain.

What should you do?

- A. Create the policy settings by using the Local security Policy tool. Apply the policy settings to the Exchange servers.
- B. Create a security template that matches the policy requirements. Run secedit.exe to apply the template to the Exchange servers.
- C. Create a new organizational unit (OU) and move all Exchange servers into the OU. Create a Group Policy object (GPO) that applies the policy settings. Link the GPO to the OU.
- D. Create a new Group Policy object (GPO) that defines the policy settings for the Exchange servers. Link the GPO to the Domain Controllers organizational unit (OU). Set a filter on the GPO to apply only to the Exchange servers.

Answer: C

14. You are the Exchange administrator for your company. The network consists of an intranet segment and a perimeter network. A server named ISA1 runs Microsoft Internet Security and Acceleration (ISA) server and connects the perimeter network to the Internet.

The network contains two servers named Exch1 and Mail1. Both servers run Exchange Server 2003. Exch1 is connected to the perimeter network and is configured as a front-end server. Exch1 also hosts Microsoft Outlook Web Access. Mail1 is connected to the intranet and is configured as a back-end server. Mail1 hosts all user mailboxes. The firewall between the intranet and the perimeter network is configured to allow RPC communications between Mail1 and Exch1.

A company investigator discovers that confidential e-mail messages are sometimes intercepted when remote users connect to Outlook Web Access on Exch1.

You need to ensure that all Outlook Web Access communications from the Internet are encrypted.

Your solution must require the minimum amount of encryption-related processing on Exch1.

What should you do?

- A. Configure ISA1 to allow HTTPS traffic between the Internet and Exch1. Instruct employees to connect to Exch1 by using HTTPS instead of HTTP.

B. Configure ISA1 to reverse proxy Outlook Web Access from Exch1. Configure Exch1 and ISA1 to use IPSec encryption when they communicate.

C. Install a server encryption certificate on ISA1. Configure ISA1 to reverse proxy Outlook Web Access from Exch1 and to require SSL encryption. Configure ISA1 to transmit unencrypted data to Exch1. Instruct employees to connect to Exch1 by using HTTPS instead of HTTP.

D. Install a server encryption certificate on Exch1. Configure ISA:IL to open the HTTPS port for incoming traffic from the Internet to Exch1, and to allow outgoing HTTPS replies from Exch1 to the Internet. Configure the Outlook Web Access virtual Web server to require SSL encryption for all connections.

Answer: D

15. You are the Exchange administrator for your company. The network consists of a single Active Directory domain. A server named Exch1 runs Exchange server 2003 and hosts all user mailboxes. Exch1 also sends and receives SMTP e-mail messages to and from the Internet. Exch1 is protected by a firewall that connects the intranet to the Internet.

Users report that they receive a large number of unsolicited e-mail messages every day. You discover that all users receive the same unsolicited e-mail messages, which are sent to a universal distribution group in the domain.

You need to ensure that distribution groups cannot be used to send e-mail messages from the Internet to company users. Your solution must not affect the ability of company users to send and receive legitimate e-mail messages.

What should you do?

A. Convert the universal distribution groups to universal security groups.

B. Configure the distribution groups so that messages are only accepted from authenticated users.

C. Configure Exch1 to reject incoming SMTP traffic from external IP addresses.

D. Configure Exch1 to send and receive SMTP traffic to and from the firewall. Configure the firewall to reverse publish the SMTP port on Exch1.

Answer: B

16. You are the Exchange administrator for your company. The Exchange organization contains two back-end servers and four front-end servers. All Exchange servers run Exchange server 2003.

New written security policies require encryption for all Internet connections to the front-end servers.

You try to modify the configuration of each front-end server, but the SSL encryption option is unavailable on each one.

You need to ensure that users can use SSL to secure Internet-based e-mail connections.

What should you do?

- A. Obtain and install a server encryption certificate on each front-end server.
- B. Obtain and install a server encryption certificate on each back-end server.
- C. Install and configure the Key Management service on a new front-end server.
- D. Install and configure Microsoft Certificate services on each back-end server.

Answer: A

17. You are the Exchange administrator for your company. The company operates a main office and one branch office. The network consists of a single Active Directory domain. The domain contains three servers that run Exchange server 2003 in a single Exchange organization.

Two Exchange servers are located in the main office and are members of the Main Office administrative group. The third Exchange server is located in the branch office and is a member of the Branch Office administrative group. User and group accounts for users in the main office are located in the Main Office organizational unit (OU). User and group accounts for users in the branch office are located in the Branch Office OU.

A new administrator is hired to perform the following administrative tasks:

Create and delete user accounts for branch office users.

Add and remove users from mail-enabled groups for branch office users.

Create and delete mailboxes on the Exchange server in the branch office.

View and manage queues on the Exchange server in the branch office.

You need to ensure that the new administrator can perform the required tasks. You must assign only the minimum level of necessary permissions.

Which two actions should you perform? (Each correct answer presents part of the solution. Choose two.)

- A. Configure the permissions on the Branch Office OU to grant full control of the OU to the new administrator.
- B. Add the new administrator to the Account operators group in the domain.

C. Configure the permissions on the Branch Office OU to enable the new administrator to manage user and group accounts in the CU.

D. Add the new administrator to the server operators group on the Exchange server in the branch office.

E. Configure the permissions on the Branch Office administrative group to assign Exchange View Only Administrator permissions to the new administrator.

F. Configure the permissions on the Branch Office administrative group to assign Exchange Administrator permissions to the new administrator.

Answer: CF

18. You are the Exchange administrator for the company.

The intranet is connected to the Internet through a firewall.

The Exchange organization contains two servers named Mail1 and OWA1. Both servers run Exchange Server 2003. Mail1 is configured as a mailbox server. OWA1 is configured as a front-end server. OWA1 is configured to allow users to access their e-mail by using Microsoft Outlook Web Access over SSL.

Internet users report that they cannot access OWA1. However, intranet users can use either HTTP or HTTPS to access Outlook Web Access.

You need to ensure that all users can access Outlook Web Access by using only HTTPS.

What should you do?

A. Configure the firewall to permit Internet users to access port 443 on OWA1. Configure the default Web site on OWA1 to require SSL.

B. Configure the firewall to permit Internet users to access port 80 on OWA1. Configure the default Web site on Mail1 to use port 443 for SSL communications.

C. Configure the firewall to allow Internet users to access port 993 on OWA1. Configure the default Web site on Mail1 to require SSL and 128-bit encryption.

D. Configure the firewall to allow Internet users to access port 143 on OWA1. Configure the Exchange HTTP virtual s

Answer: A

19. You are the Exchange administrator for your company. The Exchange organization contains two Exchange routing groups. Each routing group contains four Exchange server 2003 computers, one

Exchange server in each routing group hosts a routing group connector. The company's service Level Agreement (SLA) states that internal e-mail service should not be disrupted by the failure of a single Exchange server.

You need to ensure that e-mail messages are delivered between the two routing groups even if one of the Exchange servers fails. You want to achieve this goal by using the minimum amount of administrative effort.

What should you do?

- A. In each routing group, configure an additional SMTP virtual server on one Exchange server that is not used by the routing group connector.
- B. In each routing group, create an SMTP connector that forwards all mail for the SMTP address space of "*" to the bridgehead server in the other routing group.
- C. On the properties of each routing group connector, add an SMTP virtual server from another Exchange server.
- D. On an Exchange server that does not host the routing group connector, create an additional routing group connector and use the same local and remote SMTP virtual servers that are used by the existing routing group connector.

Answer: D

20. You are the Exchange administrator for your company. The Exchange organization contains a single server that runs Exchange server 2003.

Users send many order confirmations and order acknowledgement receipts to customers by using e-mail, users report that they are not being notified quickly enough when a message to an external customer is not deliverable.

You need to ensure that when a message is not delivered within one hour, a notification is sent to the message originator.

How should you configure the SMTP virtual server?

- A. Configure the local delay notification to one hour.
- B. Configure the local expiration timeout to one hour.
- C. Configure the subsequent retry interval to one hour.
- D. Configure the outbound delay notification to one hour.

Answer: D

21.You are the Exchange administrator for your company. The company has eight branch offices in addition to the main office. All network computers are members of a single Active Directory domain. Each office has 1,000 users, two domain controllers, and one server running Exchange server 2003. Microsoft Outlook 2003 is the only e-mail client in use.

Users often schedule meetings by using Outlook's meeting scheduling feature. They report that the available and unavailable times for other users are frequently incorrect, especially for users located in other offices. You discover that the availability information for a user can be as much as two days out of date when viewed by users in other offices.

You need to ensure that availability information is as accurate as possible in all offices.

What should you do?

- A. Configure all Active Directory site links and site link bridges to increase the frequency of Active Directory replication.
- B. Configure all Exchange servers to increase the frequency of public folder replication with other Exchange servers.
- C. Instruct all users to configure the Microsoft Office Internet Free/Busy service in Outlook 2003.
- D. Install Microsoft Schedule+ 7.0 on all client computers in all offices.

Answer: B

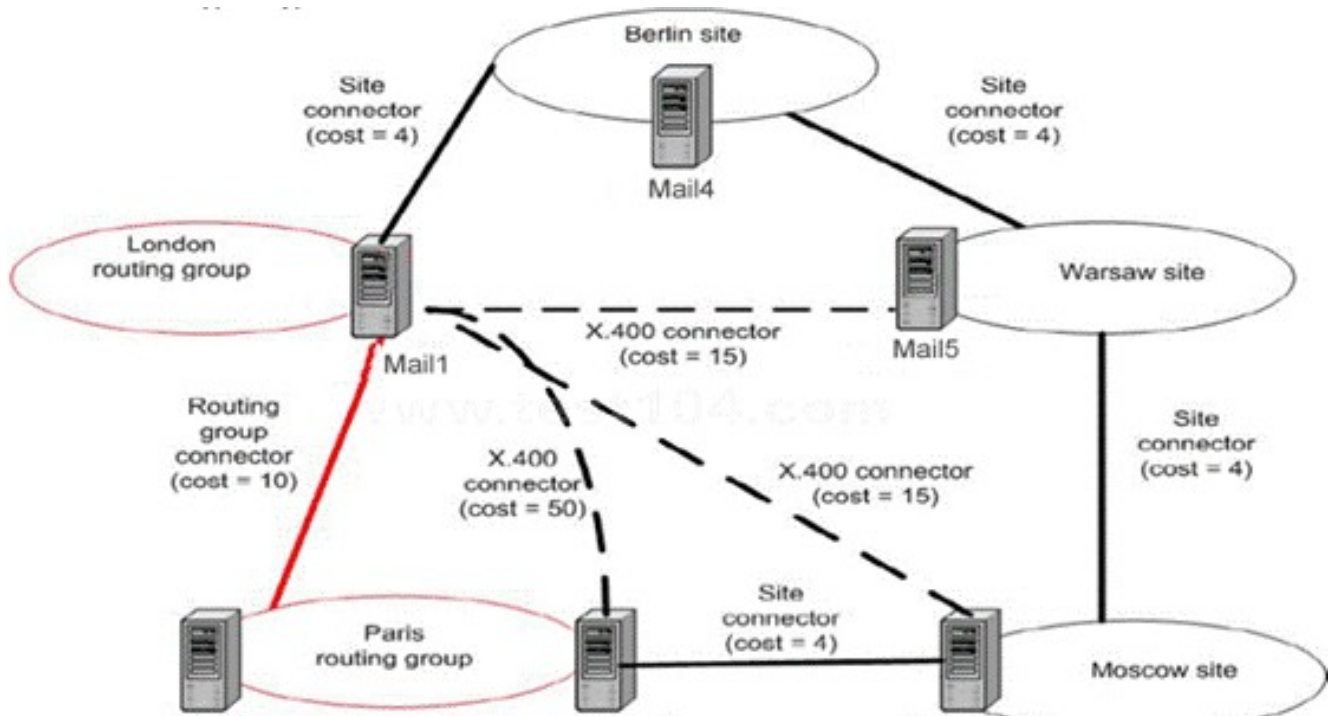
22.You are the Exchange administrator for your company. The Exchange organization is shown in the exhibit. (Click the Exhibit button.)

In the Paris routing group, Mail2 runs Exchange server 2003, and Mail3 runs Exchange server 5.5. Mail2 is configured as the bridgehead server for all routing group connectors in the Paris routing group. Mail3 is configured as the bridgehead server for the X.400 connector in the Paris routing group. Mailboxes for all Paris users are on Mail3.

Mail2 is shut down for repairs, users who have mailboxes on Mail1 report that there is an unusual delay in the delivery of messages to Paris recipients, you discover that messages between London users and Paris users are being forwarded to the servers in the following sequence: Mail3, Mail4, Mail5, Mail6, and Mail3.

You need to ensure that messages are delivered as quickly as possible between the London and Paris routing groups. You do not want to alter the normal flow of messages between any of the other sites or routing groups.

What should you do?



- A. Increase the cost of all site connectors to 25.
- B. Decrease the cost on the routing group connector between London and Paris to 5.
- C. Decrease the cost of the X.400 connector between the London and Paris routing groups to 20.
- D. Modify the routing group connector between the London and Paris routing groups to add Mail3 to the list of London routing group.

Answer: D

23. You are the Exchange administrator for your company. The network contains two Exchange server 2003 computers named Mail1 and Mail2. Mail1 is used as the mailbox server for all users. It is not accessible from the Internet. Mail2 is configured as a front-end server. Users connect to Mail2 from the Internet and access their mailboxes by using Microsoft Outlook Web Access.

The company plans to implement a new Web service application. The application will store data in public folders on Mail1. You create a dedicated public folder tree named Appdata for the public folders used by the new application. All users of the Web service application will be located outside the company network.

The Web service will access the public folders in the Appdata public folder tree by using HTTP to connect to Mail1 over the Internet. TCP port numbers will be used to identify all additional HTTP virtual servers that need to be created. The Web service will be configured to include the TCP port number in the URL of each request.

You need to enable access to the public folders in the Appdata public folder tree.

Which two actions should you perform? (Each correct answer presents part of the solution, Choose two.)

- A. Add a second HTTP virtual server to Mail2. Configure the virtual server to use TCP port 80. Associate the virtual server with the Appdata public folder tree.
- B. Add a second HTTP virtual server to Mail2. Configure the virtual server to use TCP port 80. Associate the virtual server with the Appdata public folder tree.
- C. Add a second HTTP virtual server to Mail1. Configure the virtual server to use TCP port 8000. Associate the virtual server with the Appdata public folder tree.
- D. Add a second HTTP virtual server to Mail2. Configure the virtual server to use TCP port 8000. Associate the virtual server with the Appdata public folder tree.
- E. Add a second HTTP virtual server to Mail1. Configure the virtual server to use TCP port 8000. Associate the virtual server with the default public folder tree.
- F. Add a second HTTP virtual server to Mail2. Configure the virtual server to use TCP port 8000. Associate the virtual server with the default public folder tree.

Answer: CD

24. You are the Exchange administrator for Tailspin Toys. The network consists of a single Active Directory domain named tailspintoys.com. The Exchange organization contains a single routing group that consists of two Exchange server 2003 computers named Exch1 and Exch2. Exch1 is configured as a bridgehead server for SMTP traffic to and from the internet. Exch2 contains all user mailboxes.

Tailspin Toys company purchases Wingtip Toys, which is located in another city. The wingtip Toys network contains a single Lotus Notes server named Notes1. Notes1 can receive SMTP messages that are addressed to wingtip toys.com. IP routing is configured so that the WAN link will be used as the default route for all network traffic between computers in the two locations.

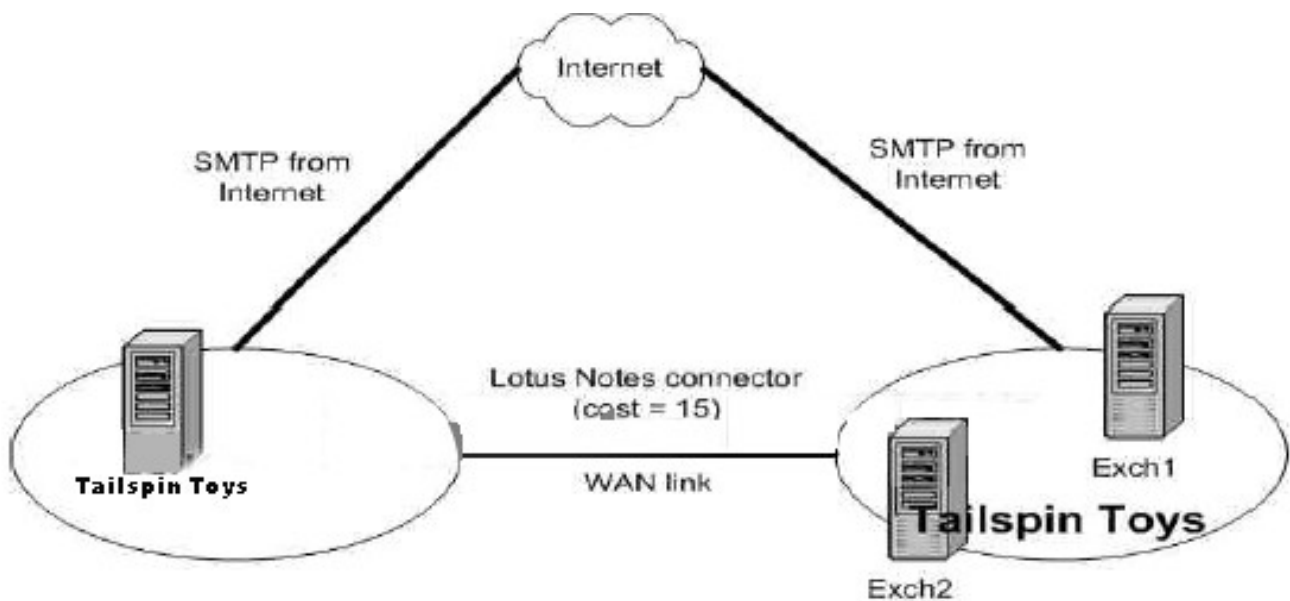
Contact objects for all Lotus Notes mailboxes in wingtip Toys were previously created in the tailspintoys.com domain. Each contact object contains the wingtip toys.com SMTP address of the

associated user. Each contact object is updated with the Lotus Notes address of the associated user. The network is configured as shown in the following diagram.

Users in Tailspin Toys report slow delivery of messages that are sent to users in wingtip Toys. When you track these messages, you discover that they are being sent by Exch1 as SMTP messages over the Internet.

you need to ensure that messages sent to users in wingtip Toys by users in Tailspin Toys will be sent by using the Lotus Notes connector.

What should you do?



- A. Configure the cost of the SMTP connector on Exch1 to be 20.
- B. Configure the cost of the Lotus Notes connector on Exch2 to be 5.
- C. Configure a Lotus Notes connector between Exch1 and Notes1.
- D. Configure the SMTP connector on Exch1 to allow a maximum message size of 1,000 KB for outgoing messages.
- E. Configure the contact objects for the Lotus Notes users to set the default e-mail address for each contact to be the Lotus Notes address.

Answer: E

25. You are the network administrator for your company. The company operates a main office and one branch office. The network consists of a single Active Directory domain. The two offices are connected by a dedicated frame-relay line. Each office contains one domain controller. Each domain controller runs the

DNS server service and hosts an Active Directory-integrated zone. In each office, all computers are configured to use the local DNS server for DNS name resolution.

Each office contains one Exchange server 2003 computer, which hosts all user mailboxes for that office. The domain controller and the Exchange server in the main office are named DC1 and Exch1, respectively. The domain controller and the Exchange server in the branch office are named DC2 and Exch2, respectively.

Monday morning, users in the branch office report that they cannot connect to Exch2. You discover that no Exchange services will start on Exch2. When you restart Exch2, the services fail to start. You delete all existing Active Directory connection objects, and all existing Active Directory connection objects, an office is in a state of failure. After restoring the frame-relay line, you restart Exch2. All Exchange services start successfully.

You need to ensure that failures in the frame-relay line will not prevent either Exchange server from starting normally.

What should you do?

- A. Configure Exch2 to have a static route to DC2.
- B. Configure Exch2 to force the selection of DC1 as a global catalog server.
- C. Modify the Active Directory configuration so that DC2 is a global catalog server.
- D. Remove all existing Active Directory connection objects, and manually create a new connection object between DC1 and DC2.

Answer: C

26. You are the Exchange administrator for your company. The network consists of two sites. Each site has its own IP subnet. Each site contains a computer that runs Exchange server 2003. The two Exchange servers are named Mail1 and Mail2. The configuration of the network and the servers is shown in the following diagram.

Users in each site have mailboxes on the Exchange server in their own site. Users in site A report that they can connect successfully to Mail1, but that e-mail sent to users in site B is not delivered.

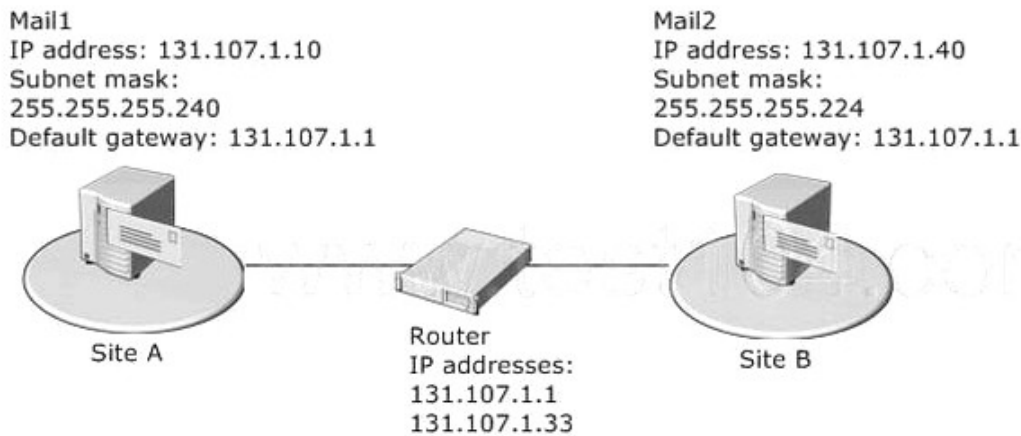
You test connectivity between the sites by using the ping command, when you attempt to ping Mail1 from Mail2, you receive the following error message: "Destination host unreachable."

You need to ensure that mail delivery occurs between the two Exchange servers.

What should you do?

Question

You are the Exchange administrator for your company. The network consists of two sites. Each site has its IP subnet. Each site contains a computer that runs Exchange Server 2003. The two Exchange servers are Mail1 and Mail2. The configuration of the network and the servers is shown in the following diagram.



- A. Reconfigure the subnet mask on Mail1 to be 255.255.255.224.
- B. Reconfigure the default gateway address on Mail 1 to be 131.107.1.33.
- C. Reconfigure the subnet mask on Mail2 to be 255.255.255.240.
- D. Reconfigure the default gateway address on Mail2 to be 131.107.1.33.

Answer: D

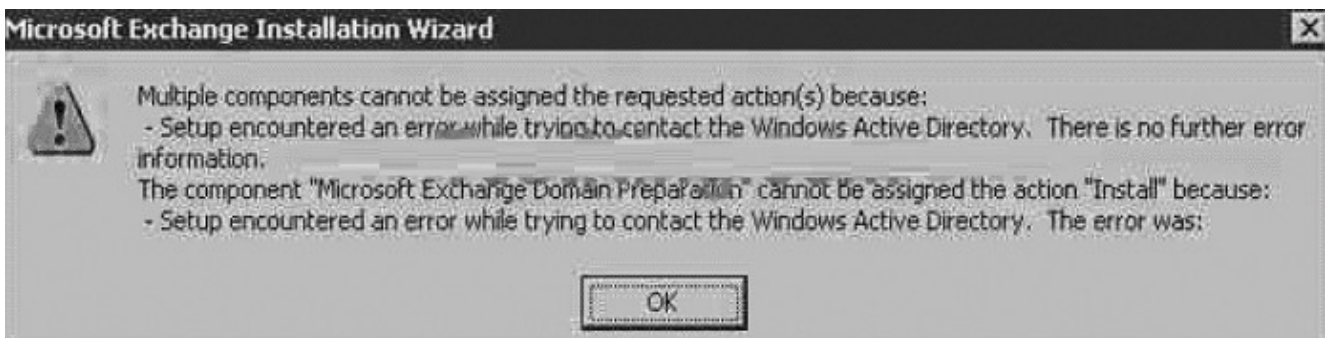
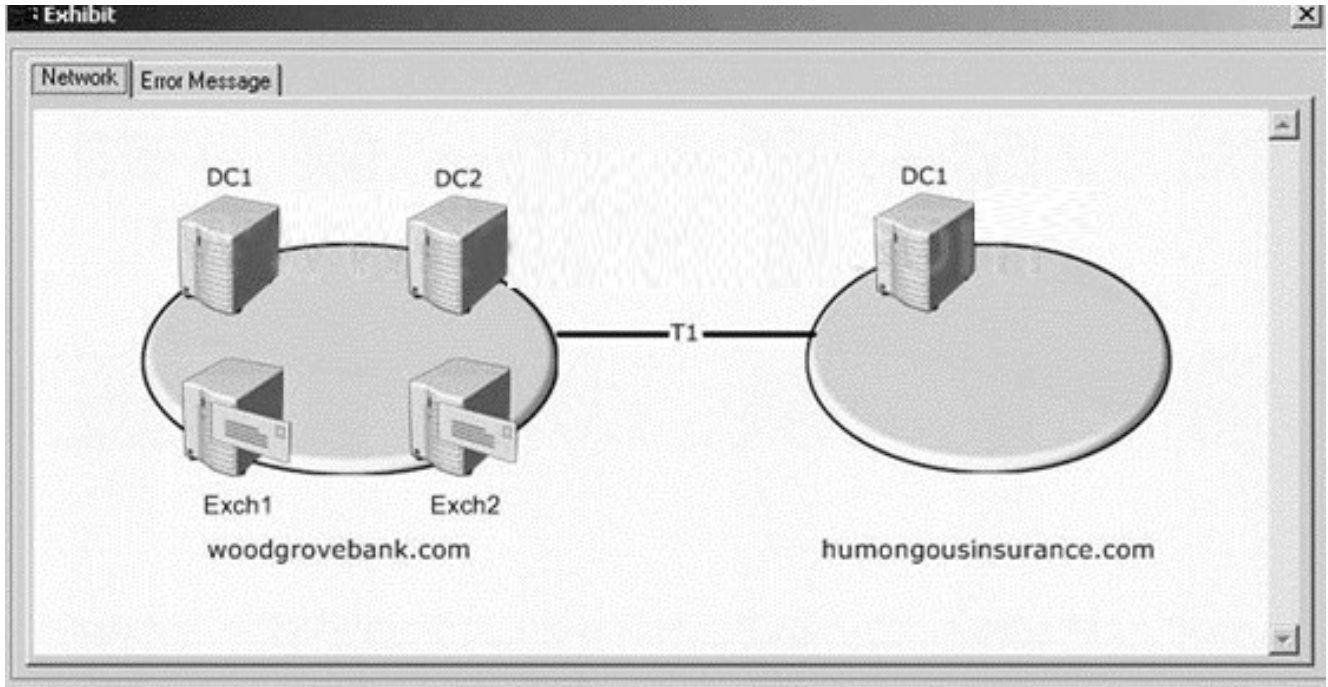
27. You are the Exchange administrator for Wood grove Bank. The network consists of a single Active Directory domain named Wood grove Bank com. The domain contains two domain controllers named DC1 and DC2, which are also configured as BNS servers. The Exchange organization contains two servers that run Exchange server 2003.

Your company acquires a subsidiary named Humongous Insurance and opens a new office for the subsidiary. You deploy a new domain controller named DC1 in a new domain tree at the new office, you configure DC1 as a DNS server. The relevant portion of the resulting network configuration is shown in the Network exhibit. (Click the Exhibit button.)

You install Windows server 2003 on a new computer in the new office. You name the new server Exch3 and join it to the humongousinsurance.com domain, you begin to install Exchange server 2003 on Exch3.humongousinsurance.com. However, the installation fails, and you receive the message shown in the Error Message exhibit. (Click the Exhibit button.)

You need to ensure that you can successfully complete the installation of Exch3.humongousinsurance.com.

What should you do?



- A. Configure DC1.humongousinsurance.com as a global catalog server.
- B. Configure Exch3.humongousinsurance.com to use one of the DNS servers at Wood grove Bank for DNS services.
- C. Configure a secondary zone for woodgrovebank.com on the DNS server at Humongous Insurance.
- D. Configure a conditional forwarder for the humongousinsurance.com zone on the OHS servers at Wood grove Bank so that all queries for humongousinsurance.com are forwarded to DC1.humongousinsurance.com.

Answer: A

28. You are the Exchange administrator for Northwind Traders. The network consists of a single Active Directory domain that contains a single Exchange organization. The Exchange servers are named Exch1, Exch2, and Exch3. All three run Exchange server 2003 and host user mailboxes.

You discover that users who have mailboxes on Exch2 cannot send e-mail messages to users who have mailboxes on Exch2. All other e-mail messages flow normally. You run the ping and the nslookup commands on Exch1. The output from the commands is shown in the exhibit. (Click the Exhibit button.)

You need to ensure that e-mail messages can be sent between all Exchange servers in the Exchange organization.

What should you do?



```
C:\>ping exch2.northwindtraders.com

Pinging Exch2 [192.168.1.50] with 32 bytes of data:
Request timed out.
Request timed out.
Request timed out.
Request timed out.

Ping statistics for 192.168.1.50:
    Packets: Sent = 4, Received = 0, Lost = 4 (100% loss),

C:\>nslookup exch2.northwindtraders.com
Server: dc1.northwindtraders.com
Address: 192.168.1.10

Name:     exch2.northwindtraders.com
Address:  192.168.1.12

C:\>_
```

- A. Remove the entry for Exch2 from the Hosts file on Exch1.
- B. Remove the entry for Exch2 from the Lmhosts file on Exch1.
- C. Manually add the new IP address for Exch2 to the DNS zone for your domain.
- D. Force a re-registration of the DNS resource records on Exch2.

Answer: A

29. You are the Exchange administrator for your company. The network consists of two subnets. All client computers are located in one subnet. All servers are located in a central data center that uses a single IP subnet. The data center contains the hosts shown in the following table.

Host name	Role	IP address
-----------	------	------------

Router1	Router	10.1.1.1
Router2	Router	10.1.1.2
Router3	Router	10.1.255.1
DC1	Domain controller	10.1.10.1
DC2	Domain controller	10.1.10.2
Mail1	Mail server	10.1.11.1
Mail2	Mail server	10.1.11.2

You install Exchange server 2003 on a new computer in the data center. The computer is named Mail3. After installation, the network administrator makes some changes to the TCP/IP settings of Mail3 as shown in the following table.

Parameter	Value
IP address	10.1.1.3
Subnet mask	255.255.255.0
Default gateway	10.1.1.2

You discover that Mail3 cannot communicate with any of the other servers. You test network connectivity on Mail3 by using the ping command, when you attempt to ping DC1, you receive the following error message: "Destination host unreachable."

You need to ensure that Mail3 can communicate with all computers on the network.

What should you do?

- A. Change the IP address of Mail3 to 10.1.10.3.
- B. Change the IP address of Mail3 to 10.1.11.3.
- C. Change the subnet mask of Mail3 to 255.255.0.0.
- D. Change the default gateway of Mail3 to 10.1.1.1.

Answer: C

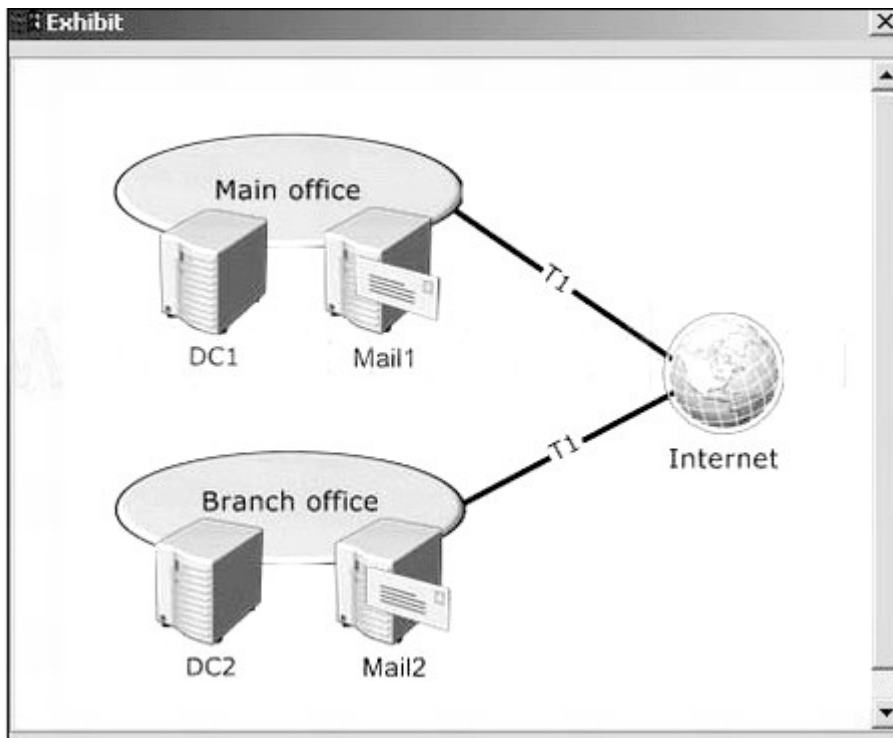
30. You are the network administrator for your company. The company operates a main office and one branch office. Both offices are connected to the Internet and use a VPN for interoffice communications. The relevant portion of the network is configured as shown in the exhibit. (Click the Exhibit button.)

The network consists of a single Active Directory domain. Each office has one domain controller. Each office also has one Exchange server 2003 computer, which hosts all mailboxes for users in that office.

Users in the branch office report that sending e-mail messages from Mail2 sometimes requires several minutes. However, the problem does not occur consistently. You discover that a large quantity of LDAP queries are passed from the branch office to DC1. You verify that DC2 is configured as a global catalog server.

You need to reduce the LDAP traffic sent across the VPN.

What should you do?



- A. Promote Mail2 to domain controller.
- B. Configure Mail2 to force the selection of DC2 as a global catalog server.
- C. Add the fully qualified domain name (FQDN) and IP address of DC2 to the Hosts file on Mail2.
- D. Modify Active Directory to place both office networks in the same site.

Answer: B